



Keep Educating and Encouraging Preservation of Yalecrest  
Yalecrest National Historic District | Salt Lake City

**Yalecrest: 1487 Structures: 1341 houses**

**1291-1280 R1**

**51-61 R2**

**>14+ iADU**

**7 eADU**

**1- 3 plex MF**

**2- 4 plex MF**

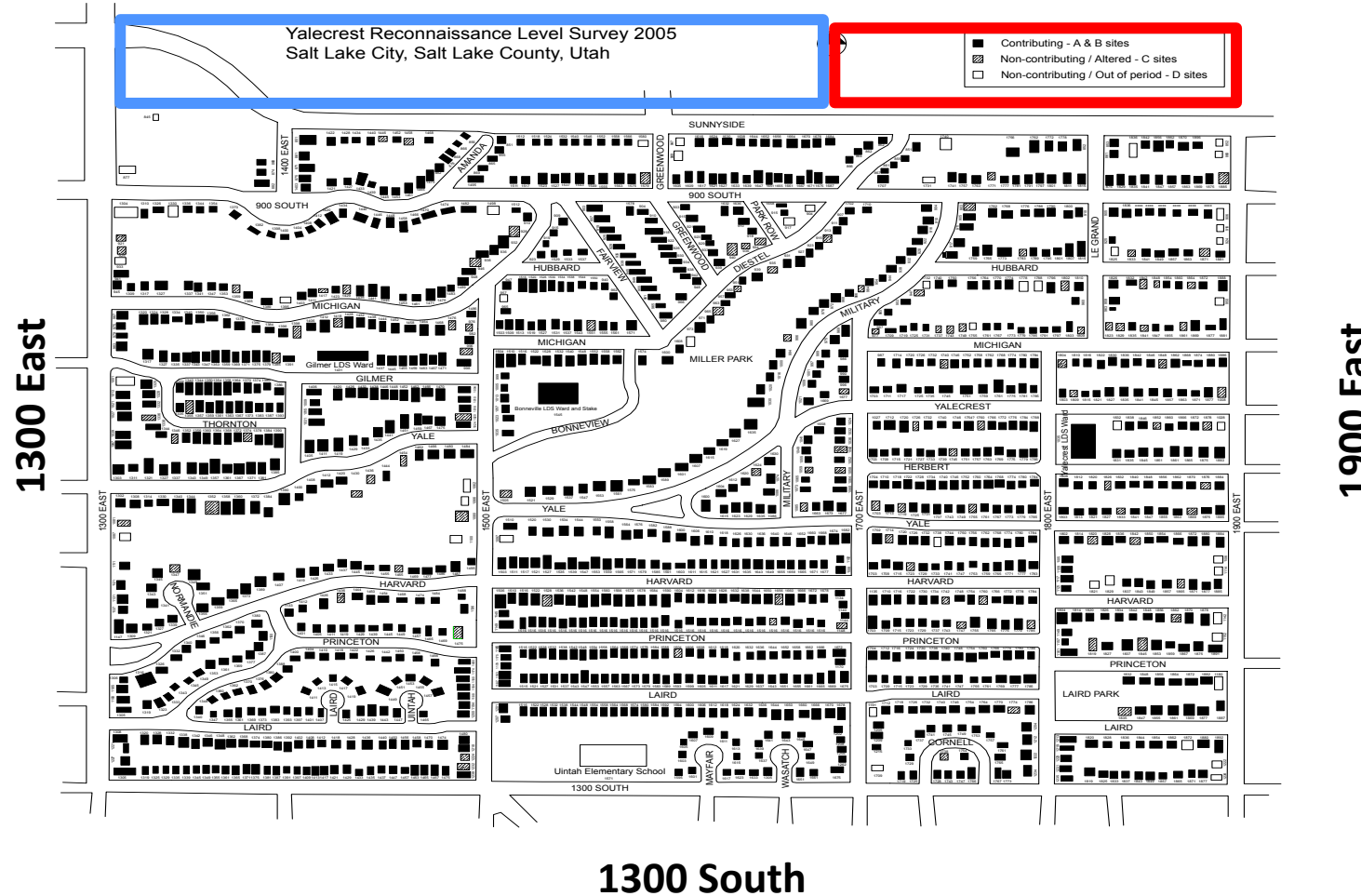
**1 -6 plex MF**

**9 unit apt**

**Sunnyside Ave**

**84105**

**84108**





Keep Educating and Encouraging Preservation of Yalecrest  
Yalecrest National Historic District | Salt Lake City



Yalecrest is a 100 yo Neighborhood

## 2007 National Register of Historic Places

Largest concentration of period revival **English Cottages, English Tudors, French Norman, Prairie School Bungalows** and Spanish Colonial homes anywhere in Utah

**91% Historically Contributing houses are located within a 6 block area**

**Remarkably visually cohesive area** with uniform setbacks, 1920-30 historic era building with comparable size, massing, Landscaping exquisite brick masonry and large tree-lined streets

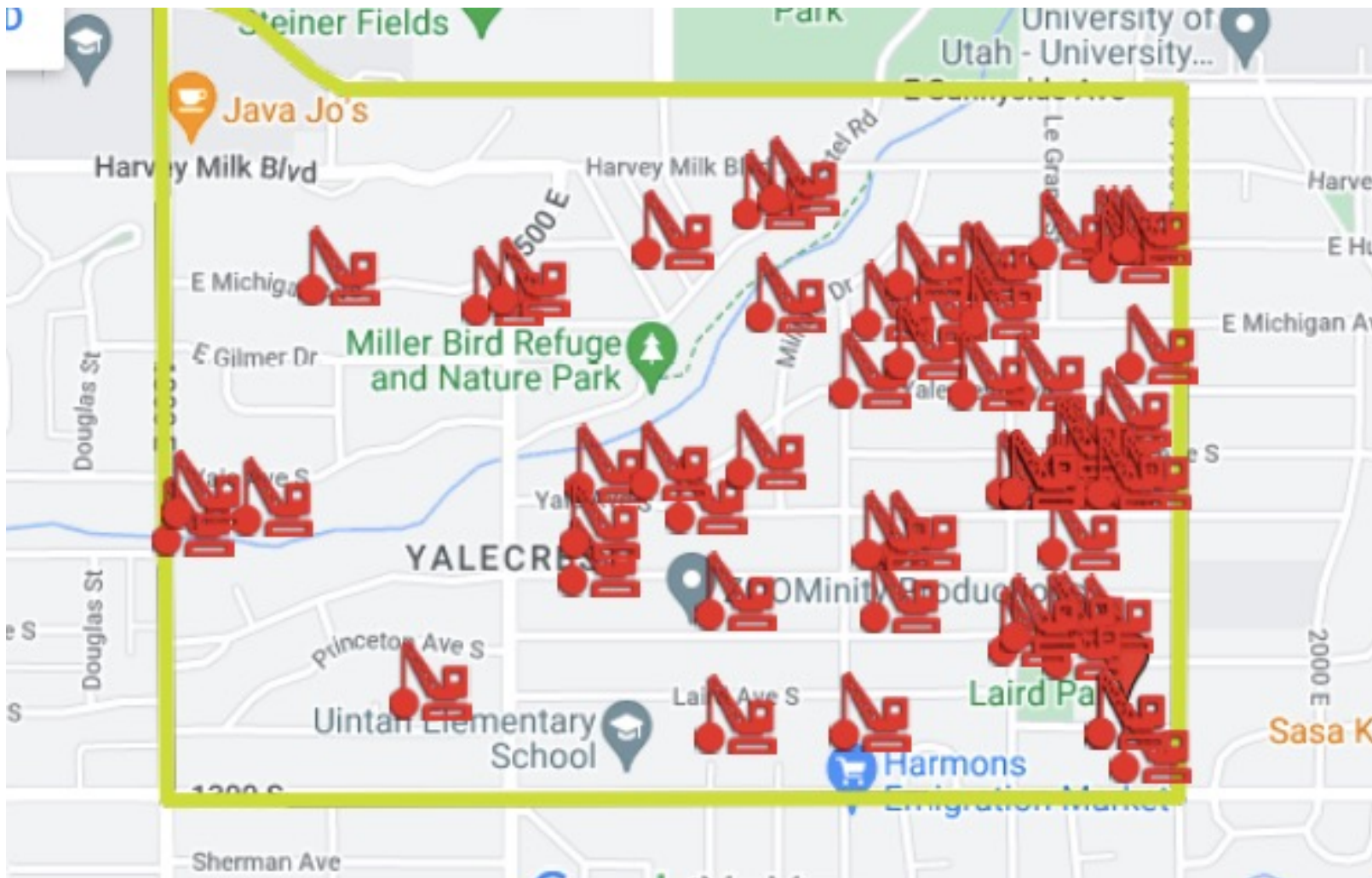
**There is no current zoning protection in place for the vast majority of the Yalecrest Neighborhood.**





Keep Educating and Encouraging Preservation of Yalecrest  
Yalecrest National Historic District | Salt Lake City

## Yalecrest Demolitions 1990-2023 (59)





Keep Educating and Encouraging Preservation of Yalecrest  
Yalecrest National Historic District | Salt Lake City

## **The only *legal* way to protect and stabilize historic neighborhoods is to create a Local Historic District**

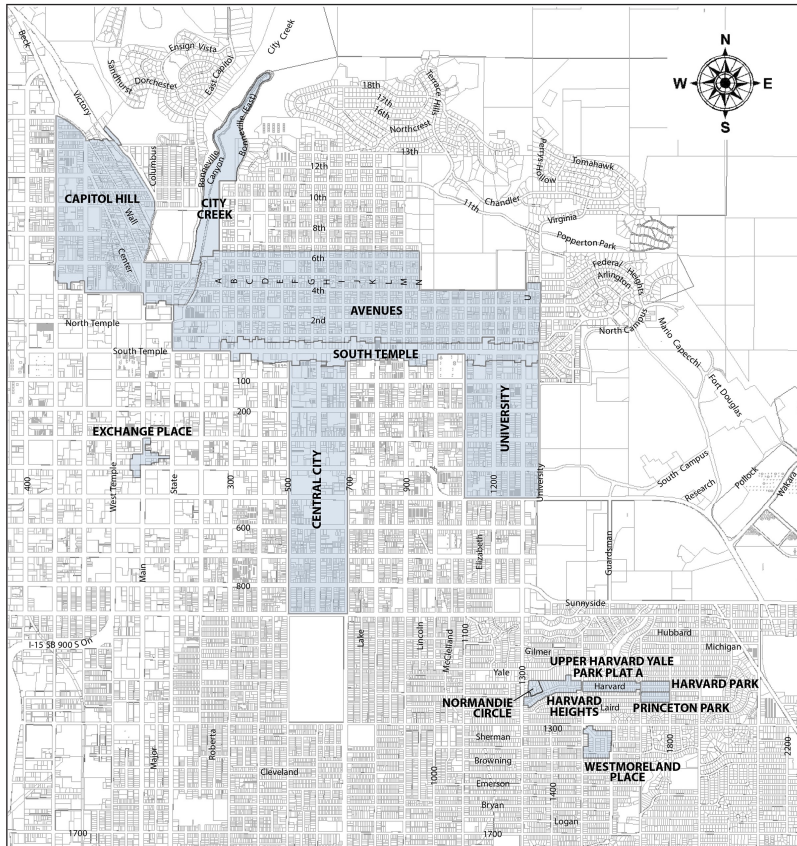
**Minimizes demolitions**  
**Encourages similar massing and size**  
**Use of compatible materials and setbacks**  
**Provides Design standards**  
**Increases stability of the neighborhood**



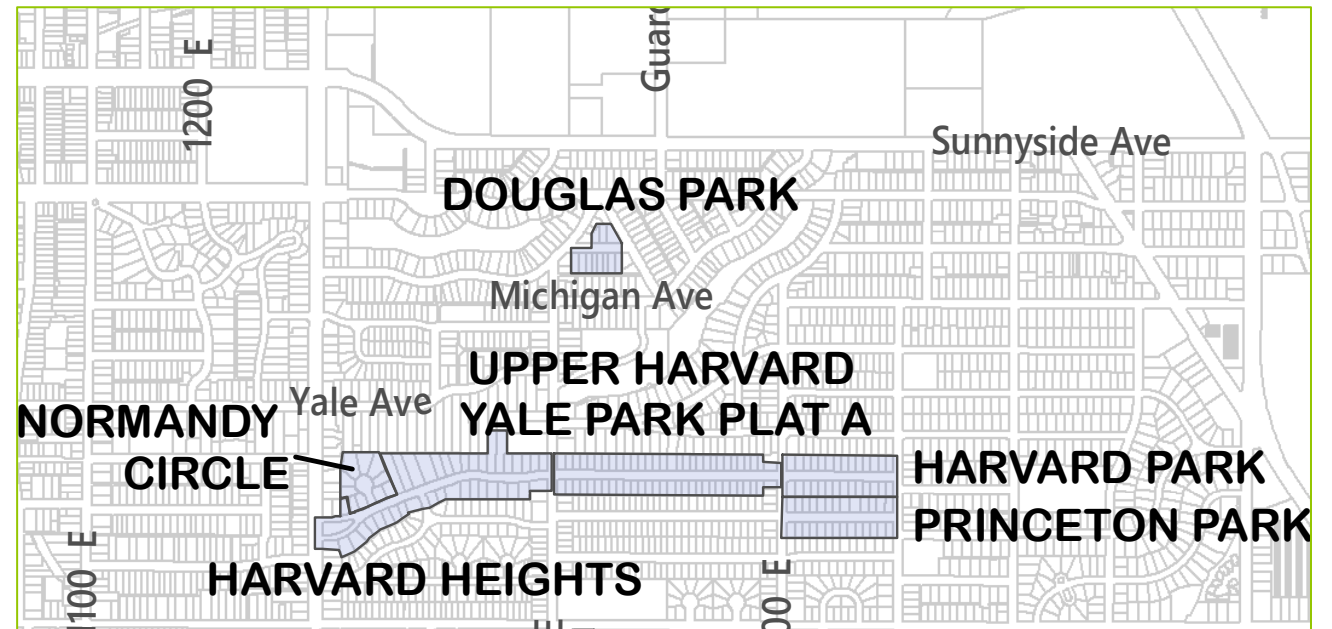


Keep Educating and Encouraging Preservation of Yalecrest  
Yalecrest National Historic District | Salt Lake City

## SALT LAKE CITY LOCAL HISTORIC DISTRICTS



**22 NRHP areas**  
**14 LHDs in Salt Lake City**  
**6 LHDs in Yalecrest**



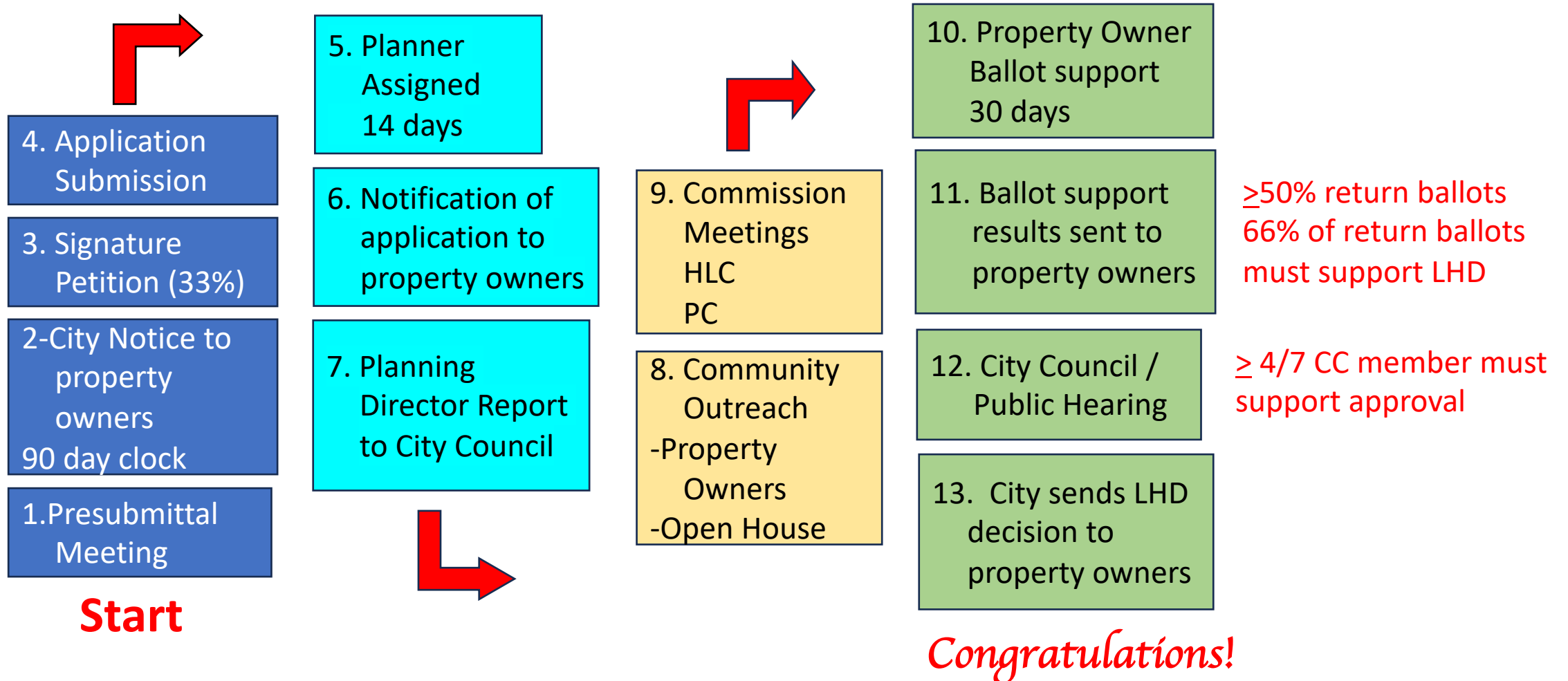
<https://www.keeppalecrest.org>  
info@keeppalecrest.org



Keep Educating and Encouraging Preservation of Yalecrest  
Yalecrest National Historic District | Salt Lake City

<https://www.keepyalecrest.org>  
info@keepyalecrest.org

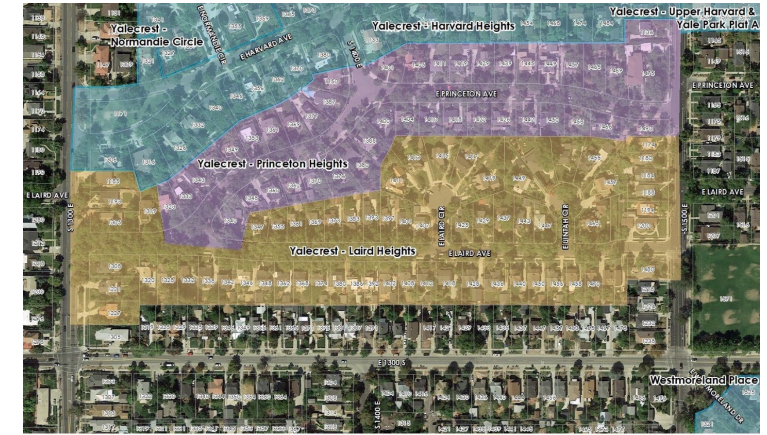
## Salt Lake City Local Historic District Designation Process



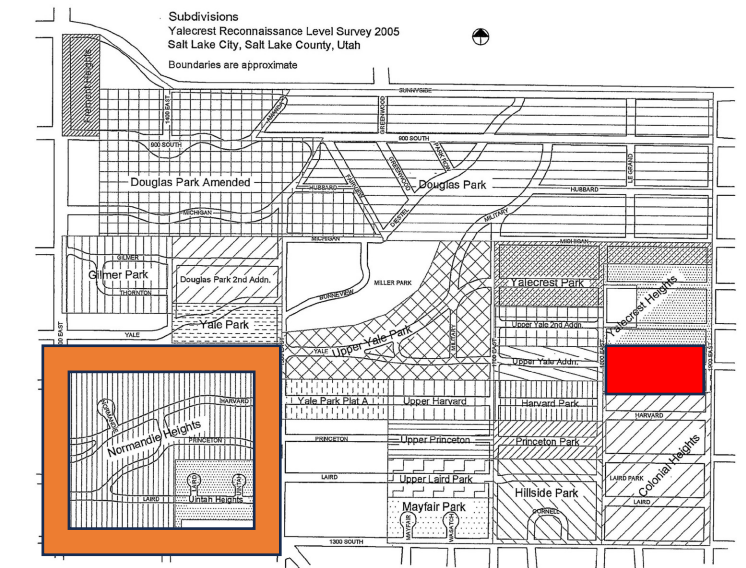


Keep Educating and Encouraging Preservation of Yalecrest  
Yalecrest National Historic District | Salt Lake City

Issue	Laird Heights LHD Gold	Princeton Heights LHD Purple	Upper Yale Heights LHD Red
PLNHLC#	PLNHLC2023-00074	PLNHLC2023-00044	PLNHLC2023-00571
# properties (houses)	68 (66): 63 SF, 3 duplexes	45 (43) 43 SF	24 (24) 43 SF, 1 duplex
Built	1920-30's	1910-50's	1920-30's
Historically contributing	97%	98%	79%
% petition signatures	65% (44/68)	67% (30/45)	71% (17/24)
HLC PC	√ Sep 7 2023 Sept 14, 2023	√ Nov 2 2023 √ Nov 8 2023	Mar 2024 Apr 2024
Balloting	Oct-Nov 16, 2023 82% support	Dec 2023 80% support	May 2024 ? support
City Council	Feb-Mar 2024	Mar-Apr 2024	Jul 2024



Proposed Local Historic Districts: Princeton Heights, Laird Heights, Upper Yale Heights  
Existing Local Historic Districts  
0 250 500 Feet



info@keepyalecrest.org



Keep Educating and Encouraging Preservation of Yalecrest  
Yalecrest National Historic District | Salt Lake City

## Yalecrest Local Historic Districts

LHD	Year	Parcels	% historically contributing
Harvard Park	2014	28	89%
Princeton Park	2014	27	96%
Harvard/Yale Plat A	2015	60	97%
Normandie Circle	2015	10	90%
Harvard Heights	2017	42	98%
Douglas Park-1	2018	11	91%
Laird Heights	2024	68	97%
Princeton Heights	2024	45	98%
Upper Yale Heights	2024	24	79%
TOTAL		315	
TOTAL R1 houses	24.3%	1291	



[This Photo](#) by Unknown Author is licensed under [CC BY-SA-NC](#)

**Let us help *YOU***  
**Protect, maintain & celebrate**  
**your street of historic homes**

<https://www.keepyalecrest.org>  
[info@keepyalecrest.org](mailto:info@keepyalecrest.org)